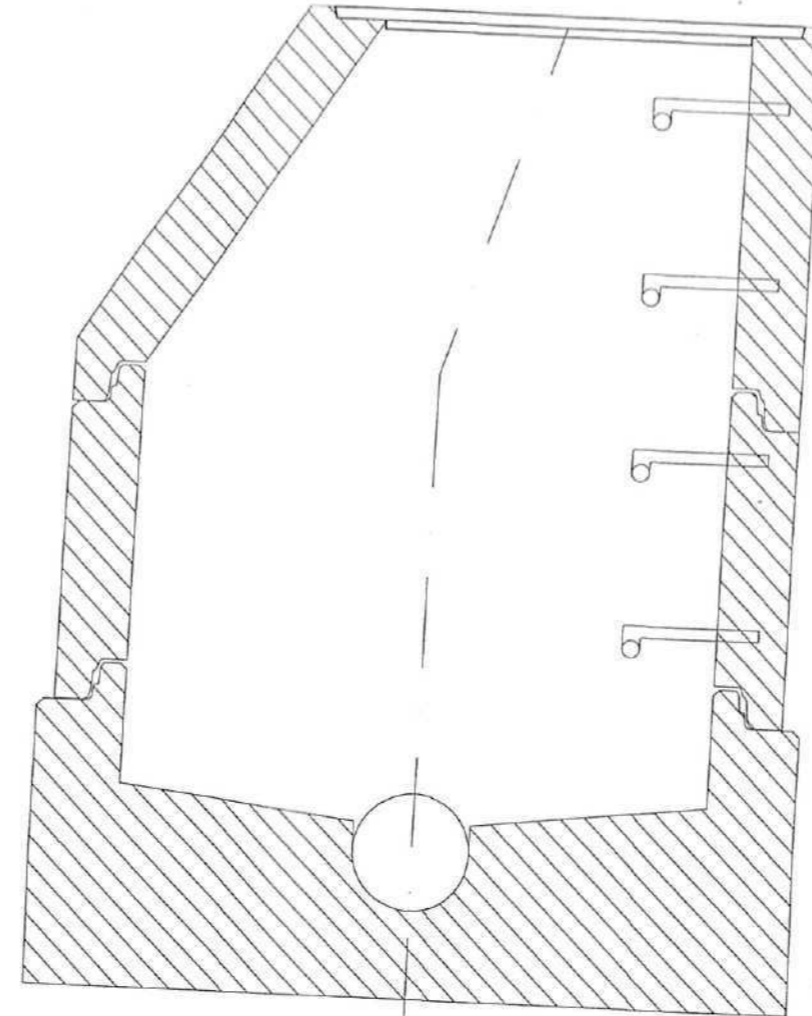
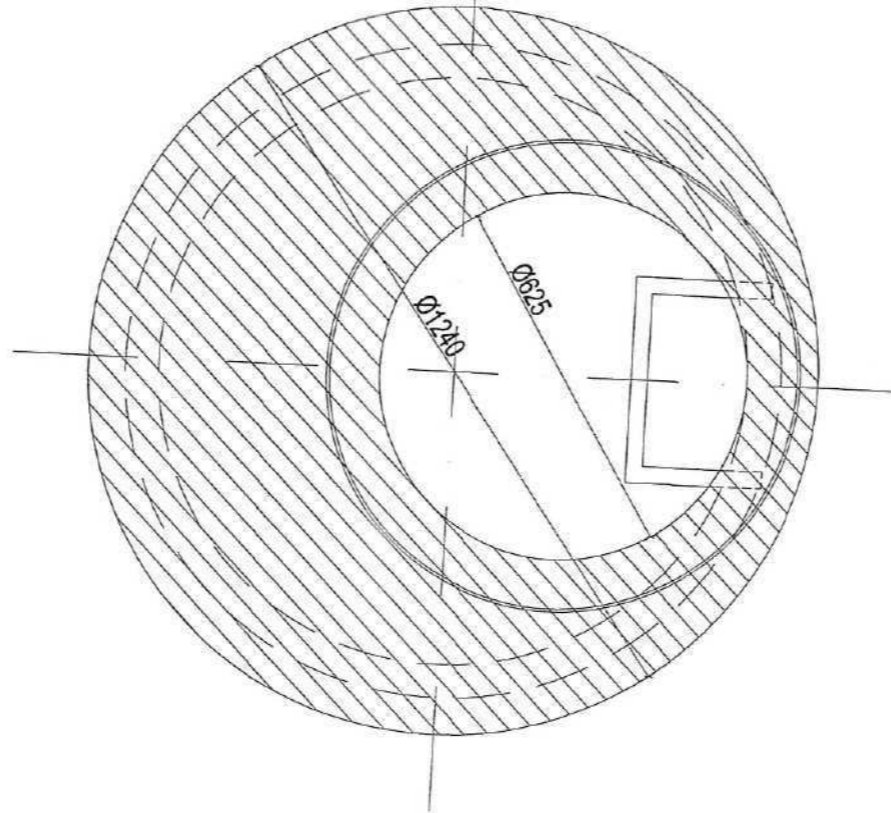


NR STUDNI/DN	RZ. WŁAZU	WLOT1	WLOT2	WLOT3	WYLOT
S1/1200	113,31	110,04	110,04		110,03
S2/1000	113,10	110,14	111,10	110,35	110,13
S3/1000	113,30	111,29	110,68		110,50
S5/1000	113,30	110,37			110,36
S6/1000	113,10	110,19			110,18
S7/1000	113,20	110,26	111,10	111,10	110,25
S8/1000	113,10	110,39	111,10	111,10	110,38
S9/1000	113,30	110,47	111,30		110,46
S10/1000	113,30	110,53	111,30	111,30	110,52
S11/1000	113,10	110,59	111,10		110,58
S12/1000	113,00	110,65	110,65	111,00	110,64
S13/1000	113,00	110,72	111,00		110,71
S14/1000	113,00	110,79	110,79	110,79	110,78
S15/1000	112,90	110,85			110,84
S16/1000	113,10	110,80	111,10		110,79
S17/1000	113,10	110,89	110,90		110,88
S18/1000	112,90	110,98	110,98	110,98	110,97
S19/1000	112,90	111,04	111,04		111,03
S20/1000	113,00	111,42	111,42	111,42	111,41
S21/1000	112,90	111,08	111,47		111,07
S22/1000	112,80	111,16	111,16	111,16	111,15
S23/1000	112,60	111,25			111,24
S26/1000	113,00		111,41	111,60	111,40



- Hr
- S1 - Hr=3,28m; S2 - Hr=2,97m; S3 - Hr=2,00m;
  - S5 - Hr=2,94m; S6 - Hr=2,92m; S7 - Hr=2,95m; S8 - Hr=2,72m;
  - S9 - Hr=2,84m; S10 - Hr=2,78m; S11 - Hr=2,52m; S12 - Hr=2,36m;
  - S13 - Hr=2,29m; S14 - Hr=2,22m; S15 - Hr=2,06m; S16 - Hr=2,31m;
  - S17 - Hr=2,22m; S18 - Hr=1,93m; S19 - Hr=1,87m; S20 - Hr=1,59m;
  - S21 - Hr=1,83m; S22 - Hr=1,65m; S23 - Hr=1,36m; S26 - Hr=1,60m;

